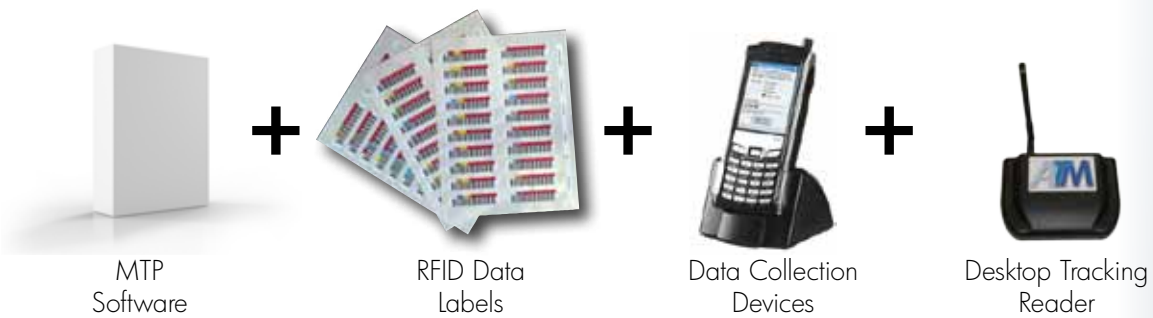


## STANDARD FEATURES LIST

- Wide Area Network compatibility
- SQL or SQL Express
- Import/Export feature
- Imaging
- History feature on Main Database Screen or via Reports
- Custom Report Writer
- Security uses either NT or Database Authentication
- Uses several portable barcode readers for easy inventories
- Built in retention Scheduler
- Track both Active and Inactive cartridges
- Cartridges can be tracked individually
- Images of cartridges can be viewed over the internet
- Built in cartridge requestor - either by Batch or Live
- Fields can be customized and made mandatory
- Cross Reference feature standard
- CFR11 module available
- Interfaces with several Electronic Carousels
- Automatically produces Over Due Report
- Can be linked to other databases through ODBC
- Data can be restricted by Department allowing multiple departments to use one database

## The Tri-Tracker System Components - A Total Solution!



### Additionally ALL

- System Planning
- System Integration
- System Implementation
- System Support



### Tri-Tracker System Components

- MasterTrak Plus - 1 to 5 users - Unlimited number of tapes
- DeskMate - Desktop Tracking Interface
- VeriTrak - Handheld scanner & software
- MasterTrak Plus Annual Maintenance - Annual software maintenance
- RFID integrated barcode labels - RFID labels



## TRI-TRACKER™ : : DATA ASSETS TRACKING SOLUTION

Tri-Tracker is Tri-Optic's automated Data Asset Management Software system solution. Tri-Tracker uses Barcodes and or Radio Frequency ID (RFID) tags to allow the creation of a custom catalog of data assets, identify missing, moved or inefficiently used items and provides efficient and timely access to the information in a custom configuration database format.

### THE PROBLEM

Organizations are constantly looking for ways to lower overhead by improving efficiency. More often than not, they find the answer they need in technology.

Nowhere is that technology more valuable than when it comes to managing company assets. Savvy operators are requiring regular and complete physical inventory of their assets to control costs. Performing a manual physical inventory is a labor-intensive, error-prone undertaking. Keeping records of hundreds, often thousands of owned and leased assets can pose a logistical nightmare. Masses of data are useless if the information cannot be easily searched, sorted, and rearranged.

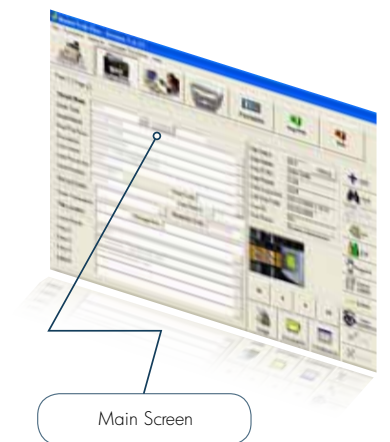


### THE SOLUTION

RFID technology has long been recognized as the quickest, most accurate and most efficient method of tracking inventory records, and capital assets. That benefits your bottom line, because the more you know, the more you can manage.

Once each item in your data asset inventory is labeled with a barcoded data asset label, taking inventory is easy using a portable barcode scanner. First, scan the room or area ID, then each labeled asset. Simply repeat the process until all the rooms and areas have been scanned, and then upload the information into MasterTrak Plus.

MasterTrak Plus assigns a unique number to each scanned cartridge, along with the common descriptive information. Data assets of different types and retention schedules can be tracked simultaneously – with ease and accuracy. Everything you need to know about any given asset at any given time is at your fingertips. That's a solution that will pay for itself through improved efficiency across the board.



## FEATURES AND CAPABILITIES

### UNIVERSAL DATA CONVERTER AND DATA IMPORT

**If you have an existing database:** it can be imported into MasterTrak Plus using the Universal Data Importer, which allows you to map your own fields of data to the selected fields within MasterTrak Plus. Once you import your data, the database is established and you can start producing reports and managing your data assets.

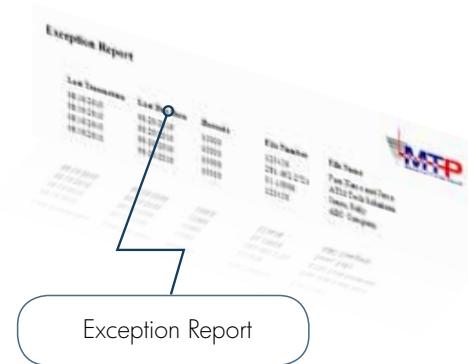
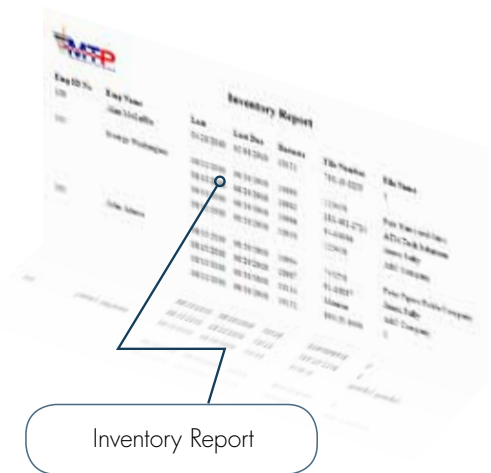
**If you do not have an existing database:** MasterTrak Plus can generate a catalog of items by assigning a catalog number for each item along with the common descriptive information about that item. To add items, using the catalog, you simply scan the room number with the portable barcode reader, then scan the item number from the catalog corresponding to the item you are about to label, then scan the barcode label you apply to the asset item.

### CUSTOM FIELD NAMING

The Tri-Tracker solution is very flexible. Each field can be changed in MasterTrak Plus to fit your specific needs including titles. Whether the records are data cartridges, storage libraries, parts or any other type of item, the system will adapt to your operations.

### CUSTOM REPORT WRITER

With the Custom Report Writer, you can produce any type of report from the entered data, including complete listings and inventory date, and exception reports that show missing, moved and added assets. You can even produce reports with total counts, sorted by any field on the report.



### DATA ASSET RETENTION SCHEDULER

The MasterTrak Plus tracking software has a built-in Retention Scheduler. By using this feature, MasterTrak Plus allows the creation of individual retention schedules for purging of cartridges or the destruction, obsolescence or sale of data assets. Simply run a report with the dates needed and a list will be generated. The report can be printed in any order. With the Tri-Tracker solution, you can utilize a portable barcode scanner to update any information, such as the location of the item, and if the item was destroyed. The information can also be updated via the Check In/Check/Out screen of MasterTrak Plus.

### RFID INTEGRATION

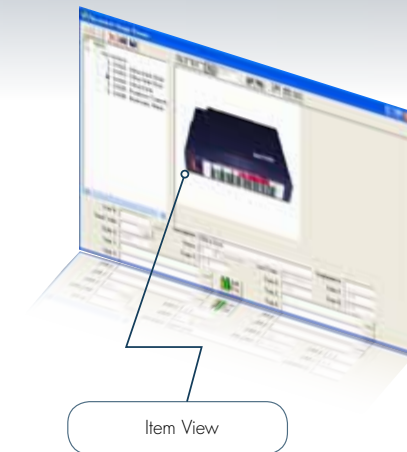
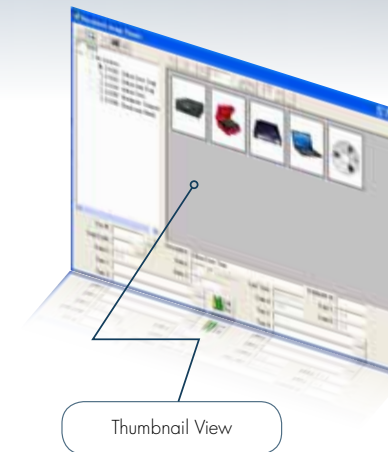
RFID is fully integrated within the Tri-Tracker solution allowing users to Read and Write UHF Gen 2 RFID labels or a small tag or transponder embedded into virtually any non-metallic object – to locate and identify data assets. The unique, factory-programmed, unalterable code number identifies the object to which it is affixed. Since RFID uses radio waves, it does not require line-of-sight between the transponder and the hand-held reader. Find precisely what you need, fast – even in environments that make visual identification impossible. RFID is the reliable way to detect, track, and control everything from data cartridges to computer equipment. Nothing can hide from a Tri-Tracker system.

### SECURITY

Also included with the Tri-Tracker solution is a comprehensive security system using ID and password for SQL or Network Authentication. Data asset deployment with signature - users sign a PDA to capture signature, time/date and other details, for reporting and verification of delivery or set-up.

### DOCUMENT IMAGING

The Tri-Tracker solution comes with Easy Image, a document imaging module allowing users to view the contents of a file without having to pull the actual file. The images can be viewed either from a PC or via the internet. The Tri-Tracker solution will automatically index the contents to the record. Simply find the record, place the documents related to or photos of the data assets of the data assets on a scanner and hit the Scan button. If you have sections within the file, the Tri-Tracker solution will allow the images to be scanned to a section.



## OPTIONAL FEATURES

- Tablet PC – data management retention scheduler and catalog can be loaded on a Tablet PC. If there are several items that are unique in nature, simply add the information via the tablet and download into MasterTrak Plus.
- RF Trak utility Software – enables RFID technology to manage your data assets with the ease of radio frequency scanning.

## TRACK AT THE SPEED OF THE INTERNET

### Manage your assets via the web with MasterTrak Plus Web:

#### Convenient Set Up

Instead of installing MasterTrak Plus on every workstation, users can access the application through a web browser. So set up is simple and fast.

#### Remote Access

MasterTrak Plus knows the location of your records in the database. You can search for asset record information from any location with online access, just the way you would on a desktop.

#### Anytime Viewing

Use your Web browser to view asset record information and related documents anywhere, anytime – not just during office hours – as long as your server is up and running.

#### Request Documents

Use your Web browser to remotely send request slips to your asset manager's printer. The request slip identifies the requester's name and user ID and includes instructions made in the comment field. The process is simple, accurate and timely.

#### Security

Access to your company's server and main database is secured with the User ID and password, your company firewall and MasterTrak Plus Web security features.

#### Reduced Maintenance Time

The single installation of MasterTrak Plus Web software simplifies maintenance and updates by reducing the number of installs required.