



What is being labeled?

Data worth millions of dollars
Data that must be readable for a very long time
Data that in most cases is irreplaceable

You would not perform surgery on yourself to save a few dollars, so why would you want to print your own labels on an inferior printer for one of your companies most critical resources.

The Tri-Optic "EDGE" is the reason why we are the industry leader in media label technology. Tri-Optic offers the most complete range of media labeling options worldwide.

Tri-Optic media label quality and accuracy is industry proven and 100% reliable. Tri-Optic believes that quality is critical to data management and in many ways represents one of the most important components of any media library.



PRECISION

Tri-Optic precision is the benchmark by which the industry measures bar code accuracy. Our bar codes have the most contrast between black and white which makes for easier more accurate reading. The edge "crispness" on our bar codes is another reason why we can guarantee a 100% reliable media label. "Quiet Zone" also plays a large part in the readability of a label. Our labels maintain white space size and spacing to ensure readability. Bar alignment and tolerance on our media labels adhere to the highest standards for spacing and size maintaining consistency between bars.



DURABILITY

Tri-Optic media labels utilize an overlamine which protects our labels from discoloration and makes them resistant to smears and smudges. Our labels have also been tested for adhesion and removal properties and meet or exceed manufacturer specifications for media labels. Tri-Optic media labels are guaranteed to exceed all expectations.



PERFORMANCE

Tri-Optic has proven itself with over 750 million data cartridge labels in use worldwide and a product line that covers more than 15 different removable media technologies. Unlike the competition, our labels are far from marginal, they perform superbly and read "first time every time." Tri-Optic constantly adjusts their labels for the highest performance properties for the printer they are printed on. This attention to detail is what sets us apart from the rest.

The Leader in Media Label Technology

Quality
Accurate
Proven
Reliable

Tri-Optic® Media Labels



The Tri-Optic® "Edge"

LTO Media Label Barcode Comparison

Characteristic Desired Maximum Variation	Desired Maximum Variation	Tri-Optic LTO	Other LTO
Width Variation of 20 Wide Black Bars	0.0015 inches	0.0014 inches	0.0028 inches
Width Variation of 30 Narrow Black Bars	0.0015 inches	0.0008 inches	0.0025 inches
Width Variation of 10 Wide White Spaces	0.0015 inches	0.0014 inches	0.0049 inches
Width Variation of 30 Narrow White Spaces	0.0015 inches	0.0013 inches	0.0049 inches

Width Variation is the difference in width between bars or spaces that should be the exact same width. Automated tape libraries rely on consistent widths for reliable first time and every time reading of the bar codes.

Tri-Optic labels are superior in every way!

Tri-Optic



Tri-Optic utilizes an overlaminate material on all media labels to ensure durability and extend media label lifespan.

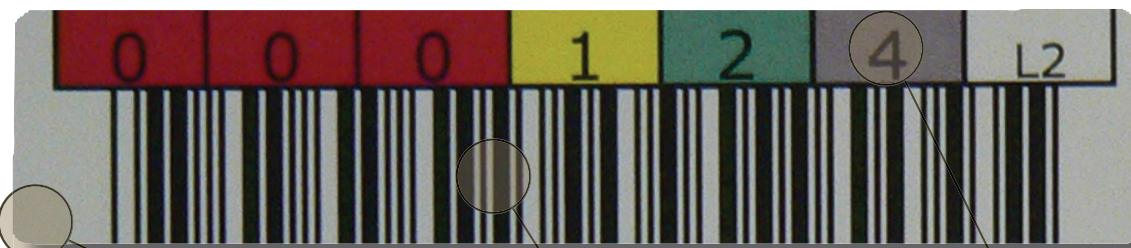
All Tri-Optic bar code widths and white space widths meet manufacturer specifications.

Tri-Optic colors and fonts are quality checked to ensure consistency.

Exploded view of bar code shows the quality of Tri-Optic bar code sharpness and fidelity.



Others



With other labels your colors and fonts are completely dependent on the printer you use.

Bar codes from others are inconsistent and can fail many of the manufacturer specification tests. This could result in a label that can not be read or is unreliable.

Others print on inferior label stock that can lead to smudges, scratches or tears on both bar code and human readable portions of the label. This leads to unreadable, unusable labels.

Bar codes from others do not meet manufacturer specifications and have inconsistent bar code widths and white spaces.

