

TRI-TRACKER™ : : DATA ASSETS TRACKING SOLUTION

Tri-Tracker is Tri-Optic's automated Data Asset Management Software system solution. Tri-Tracker uses Barcodes and or Radio Frequency ID (RFID) tags to allow the creation of a custom catalog of data assets, identify missing, moved or inefficiently used items and provides efficient and timely access to the information in a custom configuration database format.

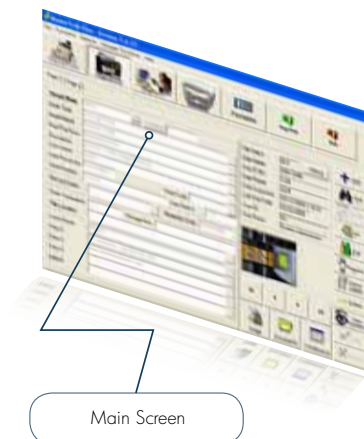
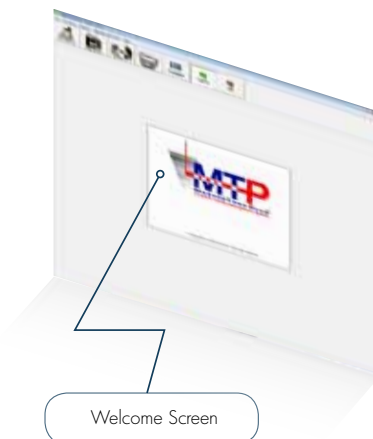
THE PROBLEMS

- Tape inventory incomplete
- Labor-intensive manual inventory
- Inability to control costs
- Tape location not easily searched



THE SOLUTION

- RFID technology for quick, accurate tracking
- Simple inventory with a portable barcode scanner
- Assign unique ID's to every tape in your library
- Upload all information, including location and retention, to Tri-Tracker Software



STANDARD FEATURES LIST

- Wide Area Network compatibility
- SQL or SQL Express
- Import/Export feature
- Imaging
- History feature on Main Database Screen or via Reports
- Custom Report Writer
- Security uses either NT or Database Authentication
- Uses several portable barcode readers for easy inventories
- Built in retention Scheduler
- Track both Active and Inactive records
- Documents can be tracked individually
- Images of documents can be viewed over the internet
- Built in Records requestor - either by Batch or Live
- Fields can be customized and made mandatory
- Cross Reference feature standard
- CFR11 module available
- Interfaces with several Electronic Carousels
- Automatically produces Over Due Report
- Can be linked to other databases through ODBC
- Data can be restricted by Department allowing multiple departments to use one database

The System Components - A Total Solution!



Additionally ALL

- System Planning
- System Integration
- System Implementation
- System Support



Tri-Tracker Solution Components

- Tri-Tracker - 1 to 5 users - Unlimited number of tapes
- DeskMate - Tracking Interface
- VeriTrak - Handheld scanner & software
- MasterTrak Plus Annual Maintenance - Annual software maintenance
- RFID integrated barcode labels - RFID labels